



EM DC240

Door Closer

www.ementrematic.com

Heavy Duty

The versatile Rack & Pinion Door Closer for demanding applications. Tested and proven to fulfil the EN1154 standard and it has also been tested and approved for 2 million cycles according to ANSI A156.4 With arm type DC190 it meets the DDA requirements in UK of opening force less than 30 N for closing force up to EN3.

Applications

- Exterior doors, large doors and doors exposed to pressure and heavy use
- Max. door width 1400 mm and weight 120 kg (standard arm system)
- Available with standard arm, hold open arm, parallel arm or sliding arm
- Non-handed, can be installed on the door or the door frame

Features

- Cast aluminium body
- Aesthetically appealing, removable, plastic cover available in silver or standard RAL colours
- Wide temperature range (+50°C to -35°C)
- Back check - breaks the opening movement, as standard
- CE-marked - allowed for fire-doors

Accessories

- DC190 Standard arm & DC199 Standard arm with locked joint (for fire doors)
- DC199 Standard arm with locked joint (for fire doors)
 - Provides maximum closing strength
 - Allows door to open 180° (depending on the door design)
- DC191 Hold-open arm (not for fire doors)
 - Including a "press button" hold-open device
 - Hold-open angle adjustable to maximum 150° (depending on the closing force of the door closer)
- DC194 Sliding arm
 - Attractive design particularly suited to avoid abuse
 - Available in silver colour
 - Installation on closing and opening side (closing side max. opening angle ~ 120°)
- Parallel arm bracket for DC190, DC191 and DC199

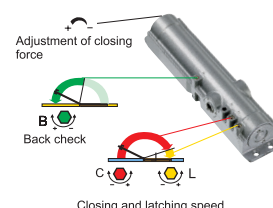
Suitable for doors with restricted space for opening

The closing force is one class less than with the standard arm

- DC152 Hold open device for sliding arm (not for fire doors)
 - Adjustable hold-open force
 - Maximum hold-open angle ~ 120°
- DC153 Opening damper for sliding arm
 - Maximum dampening angle ~ 110°
 - On external doors and doors exposed to high pressure an extra floor stopper is recommended
- DC106 Support bracket
- DC107 Angle mounting plate

Adjustments

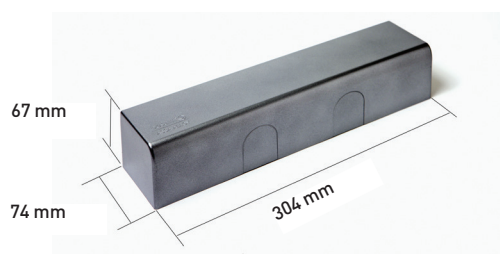
- Adjustable spring force, size 2-6 with standard arm and size 1-4 with sliding arm
- Adjustable closing and latching speed
- The starting angle for back check and latching speed adjustable
- The arm height can be adjusted (0-14mm)



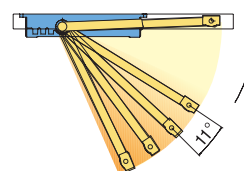
Closing Torque requirements (EN 1154)

Door closer size	Closing torque Nm (0-4°) min	Recommended door leaf width mm max	Door leaf mass kg
1	9	750	20
2	13	850	40
3	18	950	60
4	26	1100	80
5	37	1250	100
6	54	1400	120
7	87	1600	160

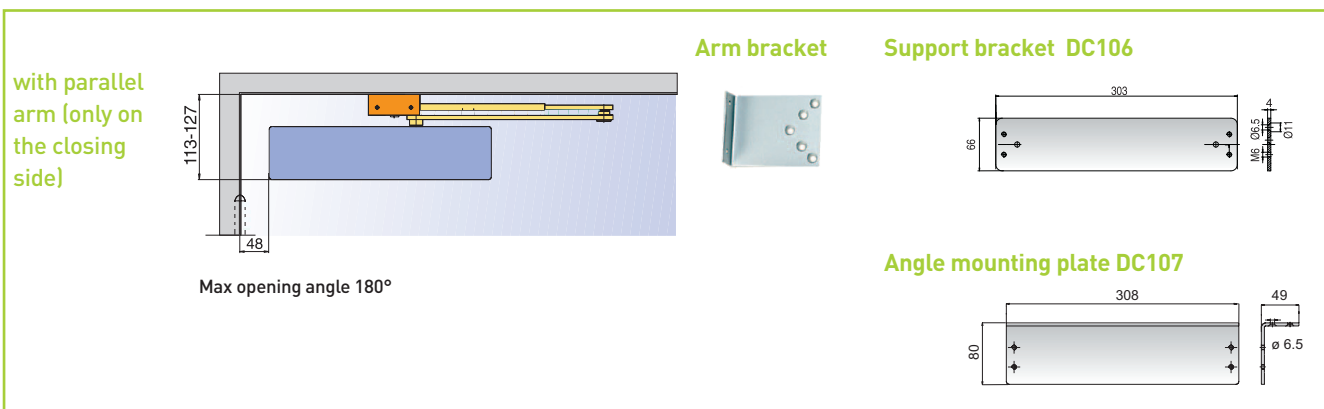
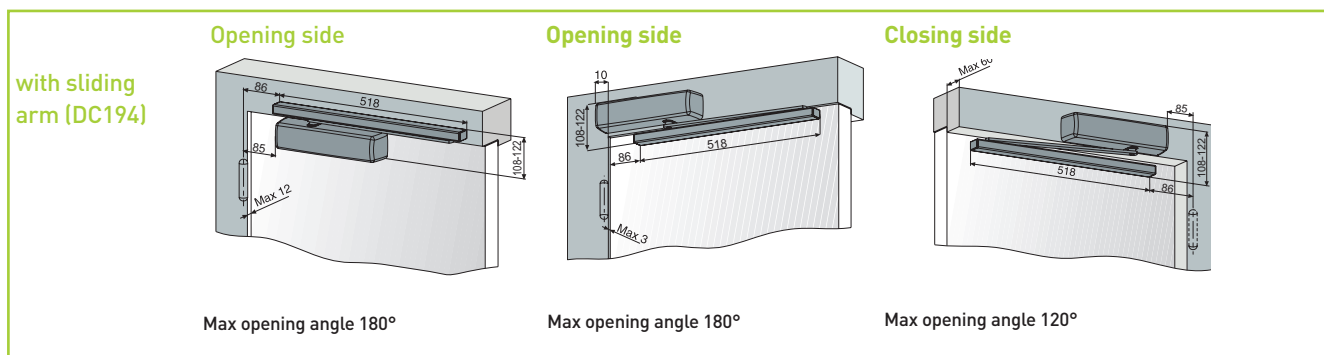
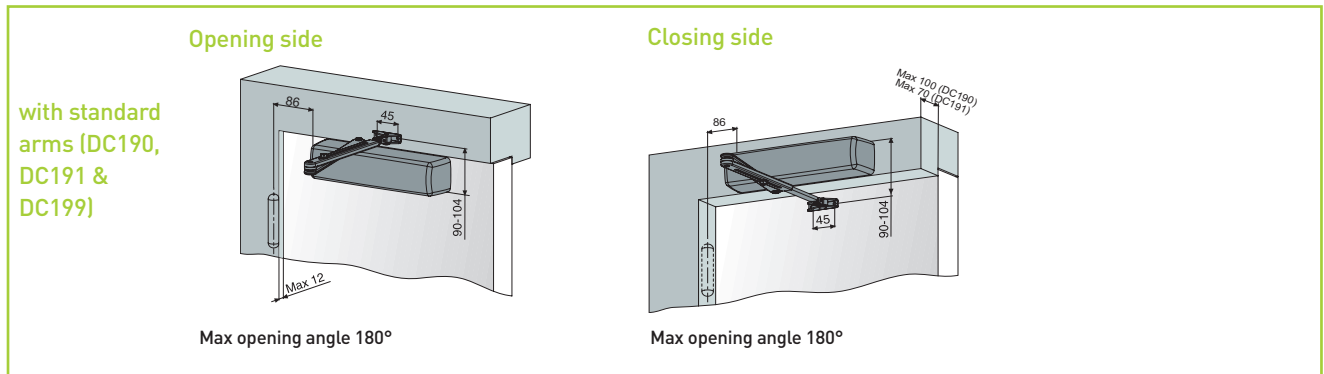
Dimensions Plastic cover



Preforce setting, adjusting latching and back check starting angle.



Installation



Entrematic

Box 669, SE 261 25 Landskrona

Phone: +46 10 47 48 300

Fax: +46 418 201 15

info.em@entrematic.com

www.ementrematic.com

www.entrematic.com

